

# Residence ICONE, Cannes

450 000 €

📍 Cannes

Комнат	Площадь	Терасса	REF #
2	43 м <sup>2</sup>	17 м <sup>2</sup>	FRRVN4

○ terrace

○ sea view

○ balcony



**ICONE**  
CANNES LA BOCCA

**SAGEC**  
RUE ALBERT FOURNIER - 06100 CANNES

**ICONE**  
CANNES LA BOCCA

**SAGEC**  
RUE ALBERT FOURNIER - 06100 CANNES



APPELANT	E
ETUDE	Marché 1
TYPE	2 Places
LOT	C 008

COULOIR / CUISINE	36.70
CHAMBRE 1 - R	13.30
CHAMBRE 2	11.20
SANIT. ET BAIN	4.70
WC	2.30
TOTAL HABITABLE	67.20 m <sup>2</sup>
TERRASSE	23.00 m <sup>2</sup>



APPELANT	E
ETUDE	Marché 1
TYPE	2 Places
LOT	C 008

COULOIR / CUISINE	36.70
CHAMBRE 1 - R	13.30
CHAMBRE 2	11.20
SANIT. ET BAIN	4.70
WC	2.30
TOTAL HABITABLE	67.20 m <sup>2</sup>
TERRASSE	23.00 m <sup>2</sup>



# Residence ICONE, Cannes

450 000 €

📍 Cannes

High quality apartments from 2 to 5 rooms with high quality finishes and spacious terraces. Some apartments, such as B704, have sea views.

The residence is located close to Croisette, beaches, stores, schools and shopping centers. Excellent transport accessibility: close to train stations and the highway.

Terms of purchase: start of sales, prices from the developer, stage payment, reduced notary fees (2%). Completion of construction — 3rd quarter of 2026.

**ICONE**  
CANNES LA BOCCA

**SAGEC**  
27, rue de la République - 06400 CANNES

**ICONE**  
CANNES LA BOCCA

**SAGEC**  
27, rue de la République - 06400 CANNES

**NF HOCC**

NUMERO	0
TYPE	3 Places
LOT	8 102

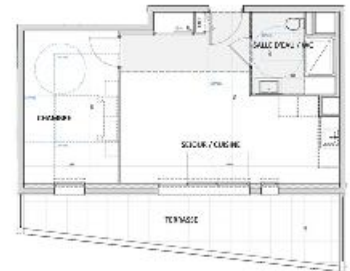
SEJOUR / TERRASSE: 24.00  
CHAMBRE: 11.00  
SALLE D'EAU: 5.00  
SALLE D'EAU / WC: 2.00  
WC: 2.00  
TOTAL HABITABLE: 44.00 m<sup>2</sup>  
TERRASSE: 15.00 m<sup>2</sup>



**NF HOCC**

NUMERO	16
TYPE	3 Places
LOT	8 102

SEJOUR / TERRASSE: 24.20  
CHAMBRE: 13.00  
SALLE D'EAU / WC: 5.00  
TOTAL HABITABLE: 42.20 m<sup>2</sup>  
TERRASSE: 14.00 m<sup>2</sup>



**ICONE**  
CANNES LA BOCCA

**SAGEC**  
27, rue de la République - 06400 CANNES

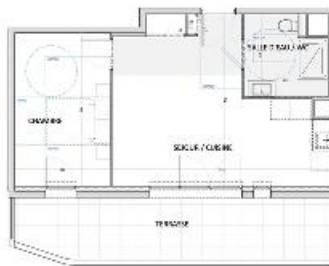
**ICONE**  
CANNES LA BOCCA

**SAGEC**  
27, rue de la République - 06400 CANNES

**NF HOCC**

NUMERO	12
TYPE	3 Places
LOT	8 102

SEJOUR / TERRASSE: 24.00  
CHAMBRE: 12.00  
SALLE D'EAU / WC: 5.00  
TOTAL HABITABLE: 41.00 m<sup>2</sup>  
TERRASSE: 15.00 m<sup>2</sup>



**NF HOCC**

NUMERO	8
TYPE	3 Places
LOT	8 102

SEJOUR / TERRASSE: 21.00  
CHAMBRE: 13.00  
SALLE D'EAU / WC: 2.00  
TOTAL HABITABLE: 36.00 m<sup>2</sup>  
TERRASSE: 25.00 m<sup>2</sup>

